

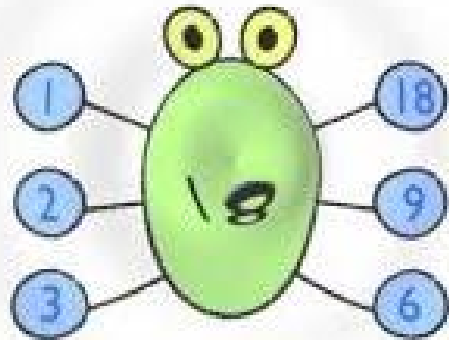
# Factors and Multiples

## Facts

A **factor** is a whole number that divides into number leaving no remainder

A **multiple** is the result of multiplying an integer by another integer. They are the numbers in the times tables.

Find the factors of 18



The factors of 18 are 1, 2, 3, 6, 9 and 18

The first five multiples of 7 are: 7, 14, 21, 28, and 35.

$$7 \times 1 = 7$$

$$7 \times 2 = 14$$

$$7 \times 3 = 21$$

$$7 \times 4 = 28$$

$$7 \times 5 = 35$$

You can skip count on a number line to find more multiples of 7.

