

BE KIND
WORK HARD



AIM HIGH

**SIXTH FORM
PROSPECTUS
2023 - 2024**



"James Calvert Spence College is small enough for us to get to know every student, so we can focus on helping you to achieve your biggest ambitions."

It's my great pleasure to welcome you to the Sixth Form provision at James Calvert Spence College, a community school that is small enough to really know all our students as individuals, yet large and flexible enough to cater fully for their different needs.

The Sixth Form is staffed with caring professionals who all have the same, positive attitude towards the things that make our school exceptional. For students who have completed their ages 9-16 education at JCSC, the staff will be the same, familiar people who have supported them through the most important years of their life so far and they will continue to show the same commitment and determination to ensure their continued success.

Students joining us from other schools will be amazed by the warm welcome they receive and how quickly they become integral members of Team JCSC. Our Sixth Form students enjoy small class sizes, excellent teaching and superb relationships with their peers and staff.

This absolute resolve to ensure we provide the very best provision for our young people begins before they join our Sixth Form. During Year 11, we work in collaboration with the students, to develop and modify our curriculum offer to make sure it truly reflects their needs and desires.

We have high aspirations for all our students. We expect Sixth Form students to show determination and a desire to achieve highly and, in return, we offer them unwavering support throughout their years with us. Members of the Sixth Form also make a significant contribution to the school, working alongside teachers in subject departments enhancing their own skills and adding value to the work of the department. Our sixth formers are fantastic role models for the younger students.

Our Sixth Form, like our other key stages, is smaller than you'll find at many other schools yet we are determined to offer a full, rich and varied choice of courses for our students who enjoy very small class sizes. In recent years, our courses have evolved and expanded to suit the demands of the local labour market and of students themselves. A-level or equivalent level 3 courses in subjects like sociology, psychology and photography have been introduced to our broad course offering. This year, we are offering the T-Level Transition Course in Digital and Education and Early Years, which allows students to take an industry placement as part of their study.

Most importantly, last year, 100% of our Year 13 students progressed to their chosen destination.

The majority earned and took up a place at university, including many Russell Group universities, and the rest of our leavers successfully went on to their choice of education, training or employment. They all left us happy, well qualified and ready to take on their next challenge.

The staff and governors are committed to James Calvert Spence College's continuing development and improvement, to ensure that it provides education of the highest quality for all students. We are proud to serve the young people of Amble and the surrounding area, and we understand how important it is for us to be at the heart of our community.

Neil Rodgers
Executive Headteacher



"At JCSC, we are passionate about supporting students to be their best; to overcome the challenges and grab the opportunities that post-16 education presents."

Our Sixth Form philosophy is built upon our school values; be kind, work hard, and aim high. Join us, and we'll work hard to ensure you can follow your desired progression route and are ready to leave school as a confident and valued member of society.

James Calvert Spence College provides a wide range of courses at Level 3. The quality of teaching and extremely strong curriculum planning was recognised in our most recent OFSTED report (2022) when our post-16 provision was awarded an OFSTED 'good' rating.

A variety of A Level, BTEC and T Level academic and vocational courses make up our post-16 curriculum, from fashion to French, our Sixth Form courses offer breadth and variety, with options tailored to meet the needs and pathways of all learners.

JCSC Sixth Form has a personalised and familiar atmosphere that allows students with a huge range of interests to thrive. Your Sixth Form tutor and pastoral officer will work with you 1:1 to ensure you plan and make the progress you need to Aim High with your next steps.

We encourage students to grow their skills and confidence by taking part in a programme of extracurricular activities designed to nurture and develop important social and employability skills. You will be expected to support the local community, have the opportunity to work alongside teaching staff as subject ambassadors and you can also make strides as a leader by becoming one of our Sixth Form Representatives.

Whether you already know our school or you are a potential new starter, at JCSC you will find a supportive and friendly learning environment where you will be given every opportunity to achieve your goals.

Mr Moore
Head of Sixth Form

Contents

JCSC Life

Pastoral Support	04
Communication	04
Events	04
Extra-curricular	04
Mental Health	04
Communication	04
Facilities	04
Leading the School	05
Form Representatives	05
Careers	06
Finance	06

Science

Chemistry	08
Physics	09
Biology	10
Applied Science	11

English

English Literature	12
English Language	13

Maths

Maths	15
Core Maths	16

Humanities/Modern Foreign Languages

History	17
Geography	18
Sociology	19
French	20

Vocational

Health and Social Care	21
IT	22
Applied Psychology	23
Sport and Physical Activity	24
Education and Childcare	25
Digital Production & Design	26
BTEC Business	27

Art & Design

Fine Art	28
Fashion	29
Photography/Graphics	30
Food Science and Nutrition	31
Design Technology	32

EPQ

33

Pastoral Support and Mental Health

We understand that Year 12 and Year 13 can bring new challenges and pressures for students. Ms Young is our dedicated Sixth Form Pastoral Support Officer and Deputy Safeguarding Lead. She is on hand to discuss any issues and offer tailored support when needed.

For support with mental health, students can access the online platform Kooth and Ms Young can make referrals to the School Health and Primary Mental Health Team.

Students also have daily contact with their tutor, who gets to know them well. Our Head of Sixth Form Mr Moore is passionate about helping students to reach their full potential. He has successfully guided students through the application process for top universities and into apprenticeships or employment for many years.

You will be able to arrange 1-1 meetings with Mr Moore to discuss challenges or plans, as needed. Our Sixth Form representatives provide an additional avenue for students to raise queries or issues.

Communication

We ask all parents and carers to download the **My Child at School** App to receive messages and news. You will also be asked to keep permissions for photography and video recording of students up to date in the app.

We celebrate student successes and share news and important announcements on the school blog, and Facebook page.

You'll be kept up to date with study progress through reports and parents evenings, which take place each year, though if you have any concerns or issues we encourage you to get in touch straight away. Miss Cassidy, the Sixth Form Pastoral Support Officer, is always happy to talk to students and parents.



Events and Extra-curricular

Day-to-day life at JCSC can truly be as busy as students choose to make it. The Sixth Form is punctuated by memorable events such as the in-school Art exhibition and EP presentation. It culminates with the Sixth Form Summer Ball, an event which is organised in conjunction with the students.

This event is always very popular, and gives students the opportunity to flex their organisational muscles, dress in their best and celebrate their achievements and time at JCSC.

Sixth formers can also get involved in extra-curricular activities such as gym fitness, basketball and climbing club, they can help out at subject specific clubs or enter the revered Duke of Edinburgh Awards scheme. Students also regularly take part in the Camps International scheme, which provides the chance to complete adventure expeditions and volunteering in other countries.

Facilities

We are proud to offer subject specific learning areas including art studios, a dance studio, climbing wall, science laboratories, a food technology suite and a design workshop with industry-standard equipment. We are situated in spacious grounds on the edge of the town, with plenty of space for outdoor exercise. Sixth Form students also have their own study and social area, the Sixth Form Social Hub.

Leading the School



We strongly believe that post-16 education is about more than academic achievement. During your time with us, we'll encourage you to develop new skills and to be a good citizen.

In the summer term of Year 12, you'll take part in our in-school volunteering programme to give back to the school and your fellow students.

You might find yourself giving classroom support to lessons for younger students, helping out with lesson preparation or working as a student mentor tasked with intervention assistance.



Some students share their interests and talents with our younger pupils by helping out with extracurricular clubs at lunchtime and after school clubs such as art, creative writing, code, drama or climbing club. This helps to develop many useful skills such as the ability to plan, lead and review group activities.

Sixth Form students also have the opportunity to raise awareness of and fundraise for different charities and events that are important to them throughout the school year.



Form Representatives



We're proud that JCSC Sixth Form is very much what the staff and students make it. Our Sixth Form Representatives have a very important role to play in shaping the Sixth Form and its culture.

There are two Sixth Form representatives elected for each year and they meet regularly with our Head of Sixth Form to communicate student voice. The Sixth Form Representatives also feedback on ideas and proposed changes and have responsibility for helping to plan Sixth Form events.

It is also part of their role to highlight all the fantastic things their peers get up to, ensuring the wider school learns about the charitable efforts and achievements of our Sixth Form students.

Careers

We are determined that every student at JCSC accesses personalised career education and guidance to inspire aspirational and appropriate destinations for when students leave us. The aim of Careers Education Information Advice and Guidance (CEIAG) curriculum is to ensure our students are well informed about the world of work, whilst developing employability skills that will allow learners to take ownership of their own career development. Both year 12 and 13 access Golbalbridge, which is an online CV and career planning platform.

Every Year 12 student completes work experience in the summer term through the Future Work programme. There are also two group university trips in Year 12 – one organised through our links with a local university and one visit to a higher education establishment further afield. Mentoring from form tutors gives students clear updates about their grades and attendance. Weekly tutor time is allocated to helping students to plan their next steps and navigate those crucial application processes.

Whether students plan to seek full-time employment, an apprenticeship, or a pathway into college and university, we ensure they are able to make an informed and supported decision about their futures. We regularly welcome external visitors to help educate students about further education opportunities and the world of work, and we incorporate careers insight into the curriculum.

Our career advisor visits the school each week. Years 11-13 have access to our dedicated Google Careers Classroom where we share events, news and opportunities. Students also visit our annual careers fair, which provides links to local and national businesses, along with local colleges, universities and apprenticeships.



Finance

We don't want financial circumstances to be a barrier for any students considering applying to JCSC Sixth Form. There are two kinds of bursaries for students aged 16 to 19 that we would encourage you to explore if finances may be an issue for you. The first is the bursary for vulnerable groups, which offers up to £1,200 paid in half termly instalments for individuals who meet certain criteria.

There is also a discretionary bursary for students who are entitled to free school meals, which is made up of a mixture of cash payments and benefits in kind including providing credit on our cashless catering system for lunches. Cash payments for this are made in arrears every half term by BACS at a rate of £15 a week for a maximum of 39 school weeks for students studying Level 3 courses. Receipt of bursary funding does not affect other means-tested benefits paid to families such as Income Support, Jobseeker's Allowance, Child Benefit, Working Tax Credit and Housing Benefit.

The school also has a small Hardship Fund for students who do not meet the above criteria but who experience particular financial difficulties during their period of study. This may provide one-off funds in exceptional circumstances. Please speak to Mr Moore, Head of Sixth Form to find out more.



Discover your perfect learning mix

"Pupils learn about the positive futures open to them after they leave school. An annual careers fair allows pupils to find out about local businesses. They learn about their interests and their strengths." (OFSTED, 2022)

James Calvert Spence College Sixth Form is a friendly learning environment that is small in size but rich in resources. Every pupil here is special to us. The staff know all our students well, which enables us to provide the very best teaching, specifically tailored to individual needs and aspirations.

If you're already at JCSC, you'll find you can choose a wide range of specialist courses right here on your doorstep. Students who join us in Sixth Form also settle in very quickly; we've got a great reputation for supporting and nurturing our students.

At JCSC Sixth Form, you will be taught by enthusiastic experts, staff who get to know you, your capabilities and help you harness your drive and ambition to carve out the career you want.

As part of the application process, our Head of Sixth Form (Mr Moore) and Head of School (Mr Nisbet) will meet with you to discuss your plans, the courses you are interested in and talk you through the next steps.

The post-16 courses for the 2023-24 academic year are subject to confirmation but it's worth knowing that we'll always try to accommodate your choices. Whether it means being flexible with timetabling or running courses with lower numbers to help you find your perfect fit.

If you'd like to find out more about any of the courses on the following pages, please do get in touch - our teachers love to talk about their subjects.

Chemistry

A Level (AQA)



Why choose this course?

A Level Chemistry attempts to answer the big question 'what is the world made of'. It's the search for this answer that makes this subject so fascinating. From investigating how one substance can be changed drastically into another, to researching a new wonder drug to save millions of lives, the opportunities that chemistry provides are endless.

What will I learn about?

Year 12

- **Physical chemistry:** Atomic structure, amount of substance, bonding, energetics, kinetics, chemical equilibria and Le Chatelier's principle
- **Inorganic chemistry:** Including periodicity, Group 2 the alkaline earth metals, Group 7(17) the halogens
- **Organic chemistry:** Introduction to organic chemistry, alkanes, halogenoalkanes, alkenes, alcohols, organic analysis

Year 13

- **Physical chemistry:** Atomic structure, amount of substance, bonding, energetics, kinetics, chemical equilibria and Le Chatelier's principle
- **Inorganic chemistry:** Including periodicity, Group 2 the alkaline earth metals, Group 7(17) the halogens
- **Organic chemistry:** Introduction to organic chemistry, alkanes, halogenoalkanes, alkenes, alcohols, organic analysis

What our students say...

Throughout the course you will complete a range of practical activities including:

- measuring energy changes in chemical reactions
- tests for identifying different types of compound
- preparation of organic solids and liquids

How is the course accessed?

There is no coursework on this course.

However, your performance during practical activities will be assessed. There are three exams at the end of the two years for A Level, all of which are two hours long.

What could I do next?

Due to their enjoyment and success in chemistry, many of our former students have gone on to study science or chemistry-based courses at Russell Group universities, such as medicinal chemistry, biomedical science, engineering, medicine and pharmacy. This has then led to them entering professional careers. Others have progressed on to further learning alongside work in chemistry-based degree-apprenticeships. Some students have used chemistry as a stepping stone to other professional careers such as law, software design and accountancy.

Entry requirements

Minimum grade 7 in GCSE Chemistry or GCSE Combined Science and grade 7 GCSE Maths due to significant mathematical application.

Find out more

Mrs Bailey and Miss Pringle will be happy to answer your questions about studying A Level Chemistry.

**"It's a challenging course
but I feel like
a genius when it falls
into place."**

Physics

A Level (OCR)

Why choose this course?

Physics is the most fundamental of the sciences, with its ultimate goal being to understand any and all aspects of our universe, from the apparently simple (e.g. the motion of a dropped object) to the highly complex (e.g. the search for the Higgs Boson at CERN). Physics is more than a subject – it trains your brain to think beyond boundaries.

What will I study?

Year 12

- Foundations of physics including physics quantities and units; making measurements and analysing data.
- Forces and motion including materials; motion; forces in action and Newton's laws of motion.
- Electrons, waves and photons including charge and current; electrical circuits; waves and quantum physics.

Year 13

- Newtonian world and astrophysics including thermal physics; circular motion and oscillations; gravitational fields; astrophysics and cosmology.
- Particle and medical physics including capacitors; electric fields; electromagnetism; nuclear and particle physics; medical imaging.

Throughout the course you will complete a range of required practical activities including:

- Investigating interference and diffraction of laser light
- Measuring acceleration due to gravity
- Obtaining a value for absolute zero

What our students say...

"I like that I get to apply my maths skills to different topics. There's a lot to learn but the homework we get makes sure we really understand it."



How is the course assessed?

There is no coursework on this course.

However, your performance during practical tasks will be assessed. There are three exams totalling 6 hours (2 x 2 hours 15 minutes and 1 x 1 hour 30 minutes) taken at the end of the course.

What could I do next?

Studying A Level Physics offers an infinite number of amazing career opportunities including:

- Geophysicist/field seismologist
- Healthcare scientist, medical physics
- Radiation protection practitioner
- Meteorologist
- Structural engineer
- Acoustic engineer
- Product/process development scientist

You can also move into areas such as engineering, astrophysics, chemical physics, nanotechnology, renewable energy and more, the opportunities are endless.

Entry requirements

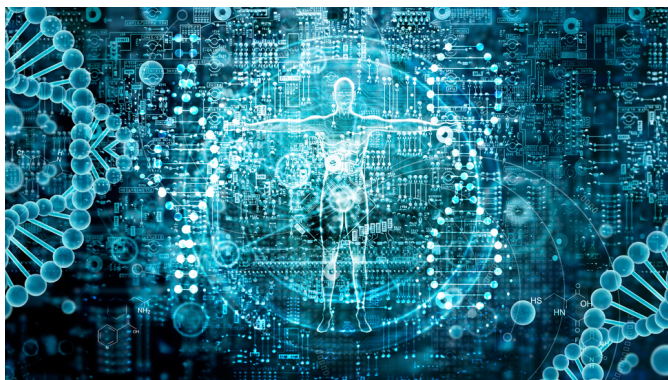
Minimum grade 7 in GCSE Physics Combined Science and grade 7 in GCSE Maths due to significant mathematical applications.

Course enquiries

If you have any questions about the course content, your suitability to join the course or possible career pathways, you can talk to Miss Pringle.

Biology

A Level (AQA)



Why choose this course?

If you are interested in how the natural world works; from what is going on inside your own body, to how animals act in the wild, then A Level Biology is for you.

We follow the AQA A Level Biology course and study topics such as cells, genetics and ecology. Practical investigations are conducted both in the lab and outside; including a field trip to study coastal habitats.

What will I learn?

You will learn about some of the latest scientific discoveries, e.g. epigenetics, and will use a variety of biological equipment in your studies. The course builds on GCSE knowledge and skills but goes into much greater scientific detail, so be prepared to apply yourself and work hard. There is also significant mathematical content, so students need strong mathematical depth.

Year 12

- Biological molecules, cells, organisms exchange substances with their environment
- Genetic information, variation, and relationships between organisms

Year 13

- Energy transfers in and between organisms
- Organisms respond to changes in their internal and external environment
- Genetics, populations, evolution and ecosystems
- The control of gene expression

How is the course accessed?

There is no coursework on this course. However, your performance during practical activities will be assessed. There are three exams at the end of Year 13.

What could I do next?

Many of our students have gone on to study one of the wide variety of related university degrees that A-Level Biology gives access to; including Medicine, Marine Biology and Sports Science, whilst other students are now part of the local scientific community.

Entry requirements

Students should have a grade 7 or above in GCSE Biology or Combined Science and a grade 6 in GCSE Maths.

Find out more

Dr Eaton and will be very happy to answer any questions you have about the A Level Biology course content and assessment methods or your suitability for the course.

What our students say...

"It's very interactive.
We get regular
support and plenty
of opportunities to
excel."

Applied Science

BTEC LEVEL 3 National Extended Certificate

Why choose this course?

If you have an interest in science or wish to pursue a scientific career then this is the course for you. Choosing to study for a BTEC National Level 3 Applied Science qualification is a great decision to make. Employers are looking for well-qualified people to work within the fields of science, medical, technology, engineering and maths and this course can act as a springboard for you.

What will I study?

Year 12

- **Unit 1: Principles and Applications of Science** covers topics including cell biology, cell specialisation and tissue function and structure.
- Chemistry covers, atomic structure, structure and bonding in applications in science and patterns in chemical behaviour and reactivity.
- Physics covers waves and how these are used in communication in the modern world, including the use of Bluetooth and mobile phones.
- **Unit 2: Practical Scientific Procedures and Techniques** covers a range of techniques and learners will be introduced to quantitative laboratory techniques, calibration, chromatography, calorimetry and laboratory safety, which are relevant to the chemical and life science industries.

Year 13

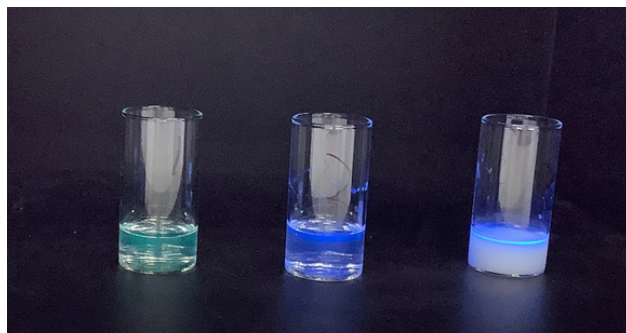
Unit 3: Science Investigation Skills

Unit 4: Students select an optional unit based on their skills and interests. Units include:

- **Enzymes in action**
- **Diffusion of molecules**
- **Plants and their environment**
- **Energy content of fuels**
- **Electrical circuits**

What our students say...

"I like that we do a lot of practicals to back up the theory, it's really advanced my lab skills."



How is the course assessed?

The course comprises four units – 58% of the course is externally examined, the rest is coursework.

- **Principles and Applications of Science** is externally examined (2 hour exam)
- **Practical Scientific Procedures and Techniques** is the chance for students to undertake a number of practical assignments marked internally
- **Unit 3** is an externally moderated exam consisting of a practical assessment followed by a written exam lasting 90 minutes.

What could I do next?

This course has been developed in the science sector to focus on providing students with the opportunity to build technical and employability skills. It is primarily designed to lead into employment or can support applications into careers in areas such as nursing, engineering apprenticeships or university degree courses such as food science. Former students have moved into dental nursing, medical practice management, and even primary school teaching.

Entry requirements

You need to be interested and enthusiastic about how science is used in the workplace and be able to work to deadlines. You will have a grade 5-5 or above in GCSE Combined Science or grade 5 in GCSE Physics, Biology or Chemistry and grade 4 in GCSE Maths.

Course enquiries

Please speak to Mr Gwillim or Mrs Bailey.

English Literature

A Level (AQA)



Who is this course aimed at?

This course is aimed at those who enjoy reading but also at those who wish to better understand their own, and others', experience of the world as a human being. It helps to foster ideas about what it means to be human and about the fundamental importance of stories in human experience. It teaches students how to examine their own and others' motivations, how to examine complex ideas critically and how to better express their own opinions persuasively and comprehensively.

A large part of the course focuses on examining ideas from multiple viewpoints. You will learn to appreciate the role of gender, race and class in the construction of texts and how these viewpoints reflect or challenge the ideas of the society which produced them.

Course Content

Year 12

Unit 1 Aspects of Tragedy: The development of the Aristotelian tradition of tragic drama including close reading of *King Lear* by Shakespeare (c1604), *Death of a Salesman* by Arthur Miller (1948) and A collection of poems by John Keats (c1820).

Year 13

Unit 3: Non-examined Unit comprises of two pieces of coursework of approximately 1,500 words each, one focused on a novel and the other on a poetry collection, both of the students' own choice. Each approaches literary criticism from a specific viewpoint – Marxist, feminist, post-colonial, eco-critical or narrative theory.

How is the course accessed?

Unit 1: Aspects of Tragedy – One examination worth 40% of overall marks

Unit 2: Political and Social Protest Texts – One examination worth 40% of overall marks

Unit 3: Non-examined Unit – two coursework pieces worth 20% of overall marks

Possible career pathways

English Literature helps prepare students for a range of degree level courses including: literature, literary criticism, English language, linguistics, foreign languages, history, politics, philosophy, psychology, law, journalism and creative writing, among others. English literature graduates are to be found in all walks of life but many often work in these industries: journalism, marketing, advertising, politics, teaching and virtually any job in which writing is a key element.

Entry requirements

A good pass in GCSE English Language, GCSE English Literature, GCSE Maths and another three subjects.

Find out more

Mr Eyeington or Mrs Moir will be happy to answer any questions you may have about this course.

What our students say...

"The course has helped me to expand my worldview and consider things from different perspectives."

English Language

A Level (AQA)

Why choose this course?

Students develop their subject expertise by engaging creatively and critically with a wide range of texts and discourses. Students will create texts and reflect critically on their own processes of production, while analysing texts produced by others. The course is aimed at students who enjoy the investigative side of English, who are inquisitive and enjoy a scientific approach to the study of language.

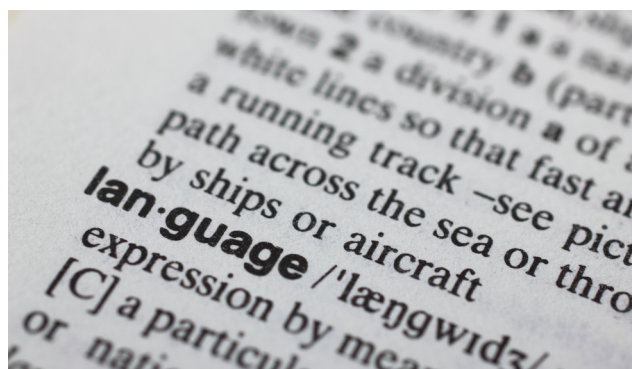
What will I learn?

You will explore the study of English language both as a medium of communication and as a topic in its own right, with an emphasis on your ability to pursue lines of enquiry, debate different views, and work independently to research aspects of language in use.

Language is seen as a creative tool for expression and social connection, as well as for individual cognition. The study of language as a symbolic system used to assert power in society is also fundamental to the scope of this course.

The methods of analysis appropriate to the fields of English language/linguistics underpin all the elements of this specification, and these are applied to distinctive topic areas. There is also the opportunity for students to pursue their own independent lines of enquiry and topics for writing, with support from their teachers, in the non-exam assessment.

Students will study a range of topics, starting with language basics and moving on to exploring different varieties of language. In their final year, students explore specialised areas such as **Children's Language Acquisition** and **Historical Language Change**.



How is the course assessed?

Your learning will be assessed through a final exam with two papers accounting for 80% of your grade and 20% will be awarded for work in an independent investigation folder.

Possible career pathways

Students have gone on to careers in journalism, creative writing, nursing, childhood studies, primary teaching, administrative careers, business and work in the civil service.

Entry requirements

Students who wish to study A Level English Language should achieve a minimum of grade 5 GCSE English Language.

Course enquiries

If you would like to learn more about studying English Language A Level, you can contact Mrs Grey to arrange a chat.

What our students say...

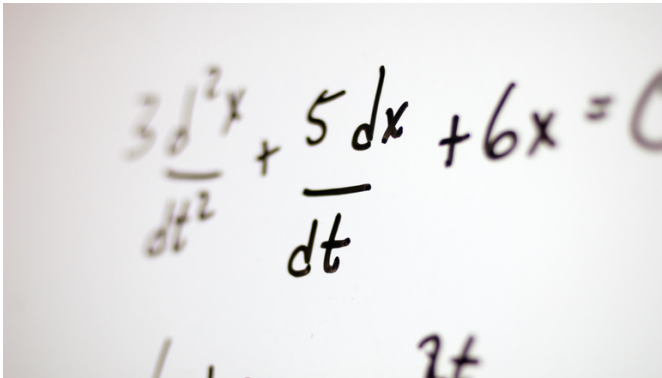
"I enjoy the debates we have about important topics like gender and race — it helps you take on different viewpoints that I can then apply."



**"Curriculum planning in the Sixth Form is extremely strong. Students speak with knowledge and enthusiasm about the subjects they study in Years 12 and 13."
(OFSTED, 2022)**

Maths

A Level (Edexcel)



A photograph of a whiteboard with a handwritten differential equation in black marker. The equation is $3 \frac{d^2x}{dt^2} + 5 \frac{dx}{dt} + 6x = 0$. The terms are written with clear differentiation notation, including the second derivative $\frac{d^2x}{dt^2}$ and the first derivative $\frac{dx}{dt}$.

Why choose this course?

A-Level Mathematics is a prestigious and well-respected course that shows strong technical ability, independent learning skills and creative problem solving to prospective universities or employers. A Level Maths is also a stimulating and challenging course.

Students will develop key employability skills such as problem-solving, logical reasoning, communication and resilience. The course itself will increase knowledge and your understanding of mathematical techniques, which will, in turn, support the study of other A Level subjects.

What will I study?

This is a linear course, therefore there are no single units. The structure of the course is a mix of pure mathematics, and applications of mathematics.

The pure maths units cover topics such as algebra, graphs, calculus and trigonometry. The applied units will include mechanics and statistics.

How is the course accessed?

This is a linear course and therefore, there will be no single units; all examinations will be taken at the end of the course. The course is assessed by three exams at the end of Year 13. All papers are two hours long. Papers 1 and 2 cover the pure mathematics course content while Paper 3 will test your knowledge on statistics and mechanics.

What could I do next?

A qualification in A Level maths will open up a number of potential opportunities to you within medicine, engineering, finance, architecture and computer science to name a few. The numerical and problem-solving aspects of the course lend themselves to a variety of disciplines and you will learn a lot of transferrable skills regardless of your future career plans.

Entry requirements

Students wishing to study A Level Maths should achieve a grade 7 or above in GCSE Maths.

Course enquiries

If you'd like to find out more about this course, Mrs Daniels will be happy to answer any queries you may have.

What our students say...

"I chose maths because I've always enjoyed it. It ties in with my science subjects and I know it will help me with my goal of pursuing further study in physics."

Core Maths

Equivalent to AS Level (AQA)

Who is this course aimed at?

Core Maths is a relatively new Level 3 qualification that enables students to develop their mathematics to gain UCAS points towards an application to university. The course sits within the A Level programme and is equivalent to an AS Level qualification.

The course is particularly suitable for those students who may not be considering A Level Mathematics but are looking to study biology, chemistry, physics, geography or psychology at A Level.

Another benefit of studying Core Maths is that some universities have lowered entry requirements for those who achieve a good grade in Core Maths.

What will I study?

This course is a one-year qualification and has a problem-solving approach with real-world maths applications. Some examples include analysis of data, maths for personal finance, statistics and probability.



How is the course assessed?

The course is assessed at the end of Year 12 by two written papers. The first paper looks at personal finance, statistics and estimation. The second paper focuses on probability and correlation.

What could I do next?

This course is aimed at those who need some maths to help them progress in their other A Level courses and to support their application to university by enabling them to receive extra UCAS points.

Entry requirements

You will need to achieve a minimum of a grade 5 at GCSE Maths.

What our students say...

“We look at useful aspects of real life like taxes and national insurance, which helps us to plan for life after school.”

Course enquiries

Any further information or specific questions about the course can be answered by Mrs Daniels.

History

A Level (Edexcel)



Why choose this course?

This course has been designed to help you develop an understanding of the value and significance of world events in the past in order to gain a deeper understanding of social, cultural, religious and ethnic diversity and of events happening today.

A big part of historical study at this level is learning how to write a great essay. You will learn how to incorporate real critical analysis into your essays and how to avoid the pitfalls of logical fallacies.

What will I study?

Year 12

- **Britain Transformed 1918-97** deals with developments and changes in Britain during the 20th century.
- **The USA Boom, Bust & Recovery 1920-55** covers the Roaring Twenties, Prohibition and the rise of organised crime and the Great Depression.

Year 13

- **The British Experience of Warfare 1790-1918** examines not only the military aspects of the French Wars, the Napoleonic Wars, the Crimean War, the Boer War and World War 1 but also the political, social and economic dimensions of these conflicts and how Britain was changed by them.
- **Non-Examined Unit – The role of Martin Luther King in the Civil Rights Movement** This is an investigation to reach a conclusion about the impact of one individual on a key historical process.

How is the course accessed?

Year 12

Unit 1: Britain Transformed 1918-97 – examination worth 30% of overall marks.

Unit 2: The USA Boom, Bust & Recovery 1920-55 – examination worth 20% of overall marks.

Year 13

Unit 3: The British Experience of Warfare

1790-1918 – examination worth 30% of overall marks.

Unit 4: Non-Examined Unit – The role of Martin Luther King in the Civil Rights Movement – coursework worth 20% of overall marks.

What could I do next?

History prepares students very well for a range of degree level subjects some of which include: History, Archaeology, Politics, Philosophy, Law, Social Work, Journalism and Literature, among others. History graduates are to be found in all walks of life but it is often a favoured subject for those opting for careers in teaching, journalism, law, social work, public services, politics and the armed forces.

Entry requirements

A good pass in GCSE English Language, GCSE Maths and three other subjects. GCSE History will be beneficial but is not essential.

Course enquiries

If you'd like to know more, Mr Eyeington or Ms Francis will be happy to answer your questions.

What our students say...

"I've developed my abilities to advocate for positions, construct an hypothesis and antithesis and to synthesise these ideas."

Geography

A Level (AQA)

Why choose this course?

This course is aimed at students who are interested in finding out about the modern world and the changes and challenges that face us in an uncertain future. Students will need to be interested in both the physical environment as well as the political and economic changes that affect people living near and in distant lands. You will need to want to know how and why the world around us is changing and want to understand what we as global citizens can do to manage the challenges ahead.

What will I learn?

Year 12

You will begin with an in-depth look at the dynamic processes taking place in coastal environments alongside a study of urban areas and the way that changes in cities impact on people around the world. This will be followed by the study of a range of natural hazards that afflict people around the world. There will also be two fieldwork days. The fieldwork is a vital part of the course, equipping students with the skills and knowledge needed to conduct the independent investigations that account for 20% of their final grade. These independent investigations will begin in the summer term of Year 12.

Year 13

You will start with the unit Changing Places. This unit looks at how people respond to and are affected by changes taking place in their localities and is a chance for students to use a lot of their own lived experience in their studies. During physical geography lessons, students develop an understanding of carbon and water cycles operating at a global scale. You will also examine the processes operating in the global economic and governance system. During autumn and spring of Year 13, some lesson time will be allocated to the independent investigation that was begun in the summer term. This investigation will be on a topic that personally interests students and is related to the units we study.

How is the course assessed?

Paper 1: This paper assesses understanding of all of the Physical geography content - **Coastal Environments, Natural Hazards and Water and Carbon Cycles**. This paper is worth 40% of the A Level qualification.

Paper 2: This paper assesses understanding of all of the Human geography content - **Urban Environments, Changing Places and Global Governance**. This paper is worth 40% of the A Level qualification.

Non-Examined Assessment Investigation: This investigation will be on a topic that personally interests you and is related to the units we study. This is worth 20% of the A Level qualification and will be internally assessed by teachers and externally moderated by AQA.

What could I do next?

A Level Geography can lead to amazing careers in the travel business, conservation, pollution and risk analysis, flood management and planning. It can also help to prepare you for senior management positions in numerous sectors. The wide range of transferable skills makes Geography one of the most employable graduate degrees.

Entry requirements

Students who have studied GCSE geography and want to continue their studies at A Level will need at least a grade 5. Students who are new to geography at A Level and who have not studied at GCSE level may be considered with the agreement of the course lead

Course Enquiries

Contact Mr Frater or Mr Sked who will be happy to answer your questions about this course.

What our students say...

"We always receive feedback so that we can improve and when we ask questions we get clear answers that help us understand."



"Students in the Sixth Form continue to learn about healthy relationships and mental health. They know how to look after themselves as they grow into young adults." (OFSTED, 2022)

Sociology

A Level AQA

Who should choose this course?

The A Level Sociology course is aimed at students who are interested in exploring the changes taking place in our society today. The course involves a critical look at the impacts of a range of factors on the lives of people in the UK and abroad. It considers the sociological explanations for the trends and patterns of change in our society and examines the tools sociologists use to research and analyse these changes.

What will I study?

Year 12

Year 12 begins with an in-depth look at the education system in the UK, the factors affecting pupils in schools and the way that educational policies have been used to try and improve educational outcomes for pupils across the country.

You will also consider different theoretical approaches to education and the impacts of globalisation and marketisation on our education system. This will lead into our research methods unit, focusing on how sociologists use a range of different data gathering techniques to evaluate the impact of education on pupils. Year 12 will end with one of the optional topics, families and the household.

Year 13

Students will begin with a focus on crime and deviance and society's response to it. This will be examined in a similar way to the education work in Year 12, by looking at the research methods that are relevant to the analysis of crime patterns and data gathering. This will be followed by the second optional unit; **Global Development**.

What our students say...

"Sociology has made me better understand how the world works, I like looking at the research behind the topics."



How is the course assessed?

You will take three two-hour exams each worth 33.3% of your grade. The first paper focuses on the education unit, the second is on optional topics that we have chosen to study and these topics are currently families and the household. The final paper focuses on **Crime and Deviance**.

What could I do next?

A Level Sociology students go on to study a range of subjects at degree level, most notably, sociology, psychology, business and law. Sociology graduates are often found in a range of exciting careers including Journalism, Law, Teaching, Social work, Policing and Advertising.

Entry requirements

Students who have studied GCSE Sociology and want to continue their studies at A Level will need at least a grade 5. Students who are new to sociology at A Level and who have not studied at GCSE level may be considered with the agreement of the course lead. Given the significant extended writing content in the examinations, a GCSE in English at grade 6 or above is recommended.

Find out more

If you have any questions about the course, Mr Frater and Mrs Donohoe will be happy to chat to you.

French

A Level (AQA)



Why should you study French?

Competence in French can help you stand out in the workplace with British, European and international companies actively recruiting competent linguists.

A Level French helps students develop confident, effective communication skills in French and a thorough understanding of the culture of countries and communities where French is spoken. It develops an interest in, and enthusiasm for, language learning and encourages students to consider their study of the language in a broader context.

What will I study?

This course helps students to develop their ability to write and speak in French with accurate grammar and syntax and to understand written or spoken French in a variety of contexts and genres.

Year 12

You will look at three trends of French society – the changing nature of family, the cyber-society and the importance of volunteer work. You will also examine three cultural aspects – heritage, music and cinema. Students also complete an analytical study of the film *Au Revoir les Enfants* by Louis Malle.

Year 13

Students focus on three current issues – the positive features of a diverse society, the life of marginalised people and how criminals are treated. You will also analyse three aspects of political life – teenagers and politics, demonstrations and strikes, immigration. All students complete an analytical study of the novel *L'Etranger* by Albert Camus, and an individual research project to present in their exam.

How is the course accessed?

Assessment consist of three papers taken at the end of Year 13:

- **Paper 1:** Listening, reading and writing (2 hours 30 minutes written paper worth 50% of A-Level)
- **Paper 2:** Writing (2 hour essay on the film or novel studied – worth 20% of A-Level)
- **Paper 3:** Speaking (21 to 23 minutes presentation of research project and discussion of themes studied – worth 30% of A-Level)

Potential career pathways

Jobs related directly to studying French include: interpreter, translator, secondary school teacher. Jobs where it is advantageous to have studied French include roles in: tourism, journalism, diplomacy, police, armed forces, research, commerce.

Entry requirements

Minimum grade 6 in GCSE French.

Find out more

Mr Favier and Mrs White will be happy to answer any queries you have about this course.

What our students say...

"I get great targeted support. The class is small and it's really in-depth learning. Studying French has influenced my plans to apply to study for an International Business Degree."

Health and Social Care

Cambridge Technical Extended Certificate

Why choose this course?

With the demographics in the UK changing rapidly and the population living longer, the health and social care sectors will experience huge growth over the next few years. For those wishing to work in these sectors, our qualification provides a solid foundation of knowledge, practical skills and experience. This course prepares the student to meet the diverse needs of the care sectors, as well as prepare them for the challenges they could face in higher education, apprenticeships or employment.

A look at the course content

This Level 3 Extended Certificate qualification has six units in total. For each of the units there is a focus on current public health trends and issues as well as the growing strain placed on the health and social care sector and practitioners who work within it. We look at current news features on a national and local level and use case studies to try and replicate real-life scenario situations.

You will study:

Unit 24: Public Health (coursework)

Unit 13: Sexual Health and reproduction (coursework)

Unit 4: Anatomy and Physiology (exam)

Unit 1: Building Positive Relationships(coursework)

Unit 2: Equality and Diversity (exam)

Unit 3: Health, Safety and Security (exam)

What our students say...

“Health and Social Care has helped me realise the importance of helping vulnerable people.”



How is the course assessed?

The coursework units are assessed internally as well as being standardised and verified to ensure accuracy. The exam units are externally assessed through written exam papers including short and long essay questions based around a variety of case studies in health, social and childcare settings. This provides a fairly equal balance of written assignments as well as exam preparation and revision.

What could I do next?

Completion of the Level 3 course will provide you with UCAS points, which could go towards an application to university. Equally, students have the potential to apply to apprenticeships as well as go on to employment. Careers in nursing, midwifery, physiotherapy, and public services have been previously accomplished by our students.

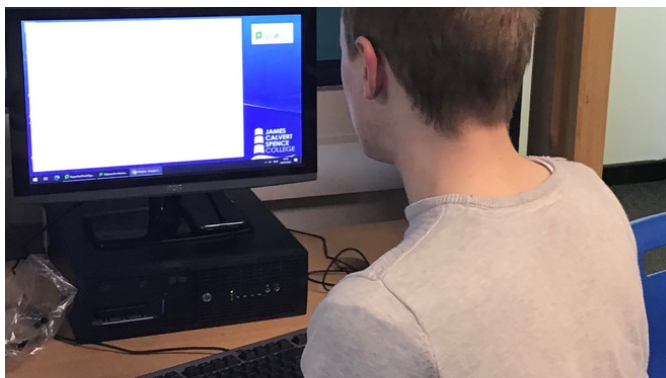
Entry requirements

Entry requirements are at least 5 GCSE's. There is a strong emphasis on science and biology as well as an emphasis on written communication both through exams and coursework.

Course enquiries

If you'd like further information or have specific questions, please contact Mr Gaines.

Cambridge Technical Extended Certificate



Who is this course aimed at?

This qualification is aimed at students who are interested in a career in IT, however, due to the flexible nature of the qualification the knowledge and experience that students gain will support them with their other subjects in addition to preparing them for further studies or employment.

What will I study?

Students develop their IT knowledge and understanding by applying the skills they learn to business-related contexts

Year 12

- **Unit 1: Fundamentals of IT** (exam unit)
- **Unit 2: Global Information** (exam unit)
- **Unit 8: Project Management** (coursework) This unit will provide you with the opportunity to understand and use various project planning skills and techniques, thereby enabling you to become more effective in the workplace.

Year 13

- **Unit 3: Cyber Security** (exam unit)
- **Unit 17: Internet of Everything** (coursework) is about the use of the internet and how it is impacting people and society. You will learn about the Internet of Everything (IoE) and how it is used. Using your knowledge, you will carry out a feasibility study for a potential idea. You will pitch your idea to potential stakeholders and use their feedback to revise your proposal.

How is the course accessed?

This vocational qualification is broken down into two parts. The first part is a Technical Certificate in IT (equivalent to an AS level qualification). The second section of the qualification taken in Year 13) is called the Extended Certificate in IT, equivalent to an A Level. There are three examined units, with resit opportunities and two centre-assessed coursework units. Each unit is graded pass, merit, distinction or distinction star.

Potential career pathways

The career pathways for IT are varied due to the nature of the qualification. However, career pathways for the qualification include:

- IT network management
- IT/Computing teacher
- Project manager
- Website designer
- Cyber security expert
- Data analyst

Entry requirements

Entry requirements are set centrally by JCSC.

Course enquiries

Those with further enquiries about the course content or their suitability for the course should talk to Mr Gaines or Mr Smith who will be happy to answer any queries you may have.

What our students say...

"There are good resources available and the teachers are really helpful. I'm planning to progress into an IT apprenticeship."

Applied Psychology

BTEC Level 3 National Extended Certificate

Why choose this course?

Psychology is a science subject, and you will have to grapple with concepts and issues, theories, and explanations. You will also explore research findings and learn how to interpret statistics. There is a practical activity element to the learning of all topics, although the overall study emphasis is theoretical.

Being a psychology student involves developing a lot of extended responses and suits learners who like to explore an argument or debate. The course covers topics such as obedience, prejudice, mental illness, child development, memory, learning, phobias, brain damage, and eyewitness testimony.

What will I study?

Psychology is the science of human behaviour and what drives us to be who we are. It can throw up many interesting questions! How can identical twins behave so differently? Why do people choose to obey commands which they know are morally wrong? Why do rewards and punishments work? What are the implications for society if we know that someone's biological makeup means they're more likely to commit murder?

Year 12

- **Unit 1: Psychological Approaches and Applications** (exam)
- **Unit 2 Conducting Psychological Research** (coursework)

Year 13

- **Unit 3: Health Psychology** (exam)
- **Unit 4: Criminal and Forensic Psychology** (coursework)

What our students say...

"We do a lot of practical experiments that help us understand the elements of the course. It means you develop your skills whilst having fun."



How is the course assessed?

Students complete coursework and take an exam in Year 12 to provide the equivalent to an A Level. You will then take a further exam and coursework assignments in Year 13 for the Extended National Certificate, which is equivalent to an A-Level. Marking grades range from a near pass through to a distinction.

What could I do next?

People who study Psychology at a degree level go on to work in a variety of careers including education, health, social work, PR, advertising, marketing, and management.

Psychology can also be counted as a science for accessing several health-related courses at a university level.

Entry requirements

Students wishing to study Psychology A Level should achieve a grade 5 in GCSE English Language or English Literature and Grade 5 in GCSE Maths.

Find out more

If you'd like to find out more about this course, you can talk to Mr Moore, who will be happy to answer any questions you may have.

Sport and Physical Activity

Cambridge Technical Extended Certificate



Why choose this course?

This Level 3 Cambridge Technical provides opportunities to develop skills demanded by employers and prepares students for progression to higher education. The course combines compulsory and optional units some of which are assessed by an externally set exam. There are also some centre-assessed, coursework units.

What will I study?

The course combines both practical sports lessons and theory study. The units you will study are:

Year 12

- Investigating Human Body Systems (compulsory)
- Sports Coaching (compulsory)

Year 13

- Sports organisation (compulsory)
- Optional units include: performance analysis, sports psychology, sports nutrition, sports injury and rehabilitation

How is the course accessed?

You will take two external exams - one in Year 12 and one in Year 13 and these account for 40% of your grade. The remainder of your grade will be decided by coursework pieces (60%). You will complete one piece of coursework in Year 12 and two pieces in Year 13.

Potential career pathways

There are opportunities for students to complete a coaching qualification with Northumberland Sport. Students can gain experience as a sports coach and complete employer-based learning. For those who wish to progress into higher education, the progression rate to degree level sports courses is high. Former Sport and Physical Activity students have moved on to specialist courses both locally and further afield.

Entry requirements

You won't need any previous qualifications to apply for this course, though Level 2 BTEC Sport is desirable.

Course enquiries

Those with further questions about the content of the course or their suitability for the course should contact Mr Moore, who will be happy to help.

What our students say...

"Sport really complements my science subjects and the practical aspect is always lots of fun."

Education and Early Years

T Level (equivalent to 3 A Levels)

Who is this course aimed at?

Anyone interested in studying the knowledge and understanding of child development and well-being necessary for working with children in a variety of settings.

What will I study?

Core Content:

Students will have an understanding of the following areas from within an educational setting;

1. Wider context of education
2. Supporting education
3. Safeguarding, health and safety and wellbeing
4. Behaviour
5. Parents, families and carers
6. Working with others
 1. Child development
2. Observation and assessment
3. Reflective practice
4. Equality and diversity
5. Special Educational Needs and disability
6. English as an additional language

You will specialise in:

In addition to the core content above, each student will have the option to specialise in one of the optional units below which are based on their chosen industry placement;

- Occupational specialism – Early Years Educator
- Occupational specialism – Assisting Teaching
- Occupational specialism – Supporting and Mentoring Students in Education Settings

What our students say...

“The course itself is very interesting because you learn about everything you need to know to work in a childcare setting.”



How is the course assessed?

Core components are assessed by two exams and a project will be set by the exam board, assessed internally at school.

What could I do next?

This course is suitable for anyone wanting a career in childcare.

Students can progress into roles such as:

- Teacher
- Early years practitioner
- Nursery nurse
- Learning support assistant
- Educational psychologist
- Educational mental health worker / Play therapist
- Special educational needs coordinator (SENCO)
- Youth worker

Students can also use this T Level to progress onto a related higher-level apprenticeship or degree course.

Entry requirements

5 GCSEs at grade 4 (or L2 Pass) and above.

Find out more

You can speak to Mr Moore to find out more about studying this exciting new T Level qualification.

Digital Production, Design and Development

T Level (equivalent to 3 A Levels)

Who is this course aimed at?

This qualification has been designed to inspire and enthuse learners to become technology savvy – producers of technology products and systems and not just consumers.

What will I study?

Core Content:

Students will develop an understanding of:

- How digital technologies impact business
- The ethical and moral implications of digital technology
- Using data in software design
- Using digital technologies to analyse and solve problems
- Digital environments, including physical, virtual and cloud environments
- Emerging technical trends, such as Internet of Things (IoT), Artificial Intelligence (AI), Augmented Reality (AR), Blockchain, 3D printing
- Legal and regulatory obligations relating to digital technologies
- The privacy and confidentiality of personal data
- The technical, physical and human aspects of internet security
- Planning digital projects
- Testing software, hardware and data
- Digital tools for project management and collaboration

You will specialise in:

In addition to the core content, each student will also develop skills in digital production, design and development. The content will include:

- Analysing a problem to define requirements and acceptance criteria aligned to user needs
- Designing, implementing, and testing software
- Changing, maintaining and supporting software
- Creating solutions in a social and collaborative environment
- Discovering, evaluating, and applying reliable sources of knowledge
- Applying ethical principles and managing risks in line with legal and regulatory requirements when developing software



How is the course assessed?

A mixture of coursework and written exams. The coursework is internally assessed at school and externally moderated by the exam board.

What could I do next?

This course is suitable for anyone wanting a career in software production and design. Students can progress into roles such as:

- Web developer
- Web designer
- Software developer
- Computer games tester
- Computer games developer
- E-learning developer
- User experience (ux) designer

Students can also use this T Level to progress onto a related higher-level apprenticeship or degree course.

Entry requirements

5 GCSEs at grade 4 (or L2 Pass) and above.

Find out more

You can speak to Mr Moore to find out more about studying this exciting new T Level qualification.

What our students say...

"It's a very hands-on course and you have a lot of responsibility to manage your own time."

BTEC Business Level 3

Who is this course aimed at?

This subject gives you a good oversight of how a range of different organisations operate including how businesses are set up and managed, how businesses advertise and market and how they are structured. The course will also look at personal and business finance.

What will I study?

Year 12

Unit 1: Exploring Business: an overview of business, how they are set up and how they are managed.

Unit 2: Developing a marketing campaign: Students are required to plan a marketing campaign for a specific business.

Year 13

Unit 3: Personal and Business Finance: You will learn how to manage debt and personal finance. You will also learn how large businesses manage their finances.

Unit 8: Chosen Unit - Recruitment and Selection Process: Looking at how businesses advertise job roles and select candidates.

(There is an opportunity to select a different unit based on personal career goals.)



How is the course assessed?

Unit 1: Internally assessed coursework.

Unit 2: Externally assessed project.

Unit 3: A written examination, externally assessed.

Unit 8: Internally assessed coursework.

What could I do next?

Business could allow you to progress either to further education (degree) in a Business or related subject, a Business Apprenticeship or employment in a range of sectors, including Accountancy, Finance, Marketing, Business Management and Teaching.

Entry requirements

5 GCSEs at grade 4 (or L2 Pass) and above.

Find out more

If you'd like further information or have specific questions, please contact Mr O'Neil

What our students say...

“The course is very interesting and unique. It's very insightful to how businesses are run.”

Fine Art

A Level (AQA)



Why choose Fine Art?

This course is for students who have a proven keen interest in Art. As an A Level Fine Art student at JCSC you will have access to a range of materials and processes as well as a printing press, digital SLR cameras, Photoshop and a photography studio. Students typically experience a number of class visits to The Baltic, The Hatton and The Laing Gallery in Newcastle-uponTyne, as well as locations for workshops and research for their chosen theme.

What will I study?

Component 1:

Personal investigation. This is a practical investigation supported by written material. Students are required to conduct a practical investigation into an idea, issue, concept or theme, supported by written material. The focus of the investigation must be identified independently by the student and must lead to a finished outcome or a series of related finished outcomes. The written material must confirm understanding of creative decisions. It must also provide evidence for all four assessment objectives by clarifying the focus of the investigation, demonstrating a critical understanding of contextual and other sources, and substantiating decisions leading to the development and refinement of ideas. It should record ideas, observations and insights relevant to intentions by reflecting critically on practical work, making meaningful connections between visual, written and other elements.

Component 1: Externally set assessment

A question paper in Year 13 consisting of a choice of eight questions to be used as starting points. Students are required to select one question. Preparatory work should be presented in any suitable format, such as sketchbooks, models and maquettes. Following the preparatory period, students must complete 15 hours of unaided, supervised time over three days. In the 15 hours, students must produce a finished outcome or a series of related finished outcomes, informed by their preparatory work. Timed and preparatory work will be assessed together against all four assessment objectives. Students will be assessed on their ability to work independently, within the specified time constraints, and for their ability to develop a personal and meaningful response.

How is the course assessed?

This is a two-year course that is made up of 60% coursework (Component 1 –personal investigation) and 40% Externally Set Assignment (Component 2, completed Y13).

What could I do next?

The progression rate to higher education is extremely successful with students going on to study in some of the top-ranking universities for art and design-based degrees and progressing into creative careers..

Entry requirements

A minimum grade 5 in GCSE Art, Photography or Graphic Communication.

Course enquiries

Mrs Yuill will be happy to answer questions.

What our students say...

Studying Fine Art at JCSC has helped me get an unconditional offer to further my studies at The Northern School of Art."

Fashion

BTEC LEVEL 3 National Extended Certificate

Why choose this course?

This BTEC Level 3 Fashion qualification is a two-year course that takes a unit-by-unit approach and uses a combination of assessment styles. This gives you the opportunity to showcase your skills and apply your knowledge in an appropriate, work-related context. It also provides evidence of what you can do when you apply to enter higher education or employment, possibly in the creative industries.

Students have access to a range of materials and processes as well as a printing press, sewing machines, a knitting machine, digital SLR cameras, Photoshop and a photography studio. Throughout the course, you will be able to experience visits to The Baltic, The Hatton and The Laing Gallery in Newcastle-upon-Tyne. There are also visits to suitable locations for students to complete workshops and research their chosen theme.

What will I learn?

Learners develop Fashion & Textile projects and gain an understanding of the creative process. They study visual recording and communication, as well as critical analysis and production skills to produce fashion and textile outcomes

The units we complete here at JCSC are:

- **Unit 1: Visual Recording & Communication** (mandatory/externally assessed)
- **Unit 2: Critical & Contextual Studies in Art & Design** (mandatory/externally assessed)
- **Unit 3: The Creative Process** (mandatory)
- **Unit 14: Textiles Materials, Techniques & Processes** (optional) or
- **Unit 15: Fashion Materials, Techniques & Processes** (optional)



How is the course assessed?

The course is made up of four units, of which three are mandatory and two are external. Mandatory content (83%). External Assessment (58%).

What could I do next?

This course gives students the opportunity to develop a portfolio of their own work and will cultivate a personal style which they could then potentially take further in higher education. Once this Level 3 course has been completed, the progression rate to higher education is extremely successful with students going on to study in some of the top-ranking universities for fashion and design-based degrees.

Entry requirements

At least a Pass in BTEC Art or a grade 5 in GCSE Art/Graphic or a proven keen interest in Fashion.

Course enquiries

Mrs Yuill will be very happy to answer any questions you may have about this course.

What our students say...

"I chose fashion as something new to learn. It's a very creative subject."

Photography/Graphics

A Level AQA



Why is this course aimed at?

A Level Photography or Graphic Communication is for anyone wishing to be hardworking, creative and independent. Students have access to digital SLR cameras, Photoshop and a photography studio, but can use the camera on their mobile phone to access this course. Throughout the course, students will be able to experience visits to The Baltic and The Side Photography Gallery in Newcastle-upon-Tyne, as well as suitable locations for workshops and photoshoots for their chosen theme.

What will I study?

Students develop and apply their knowledge, understanding and skills specified to realise personal intentions relevant to photography or graphic communication and their selected area(s) of study.

Component One (practical investigation)

Students will conduct a practical investigation, into an idea, issue, concept or theme, supported by written material. The focus of the investigation must be chosen independently by the student and must lead to a finished outcome or a series of related finished outcomes. The written material must confirm understanding of creative decisions and provide evidence for all four assessment objectives by clarifying the focus of the investigation, demonstrating a critical understanding of contextual and other sources, and substantiating decisions leading to the development and refinement of ideas. It should record ideas, observations and insights relevant to intentions by reflecting critically on practical work, making meaningful connections between visual, written and other elements.

Component Two (externally set assignment)

The photography question paper (AQA) will consist of a choice of eight questions to be used as starting points. Students select one. Examination papers will be provided Feb 1st in Year 13, or as soon as possible after that date.

Preparatory work should be presented in any suitable format, such as portfolios or digitally. Following the preparatory period, students complete 15 hours of unaided, supervised time over three days. In the 15 hours, students must produce a finished outcome or a series of related finished outcomes, informed by their preparatory work. Preparatory work and work produced during the 15 hours of supervised time will be assessed together.

Students will be assessed on their ability to work independently, working within the specified time constraints and developing a personal and meaningful response.

How is progress accessed?

This is a two-year course that is made up of 60% coursework (Component 1) and 40% Externally Set Assignment (Component 2).

Potential career pathways

This qualification could lead to a career in photography, advertising, teaching, digital content creation, journalism, art, museums and galleries, graphics, or working within the creative industries.

Entry requirements

Minimum grade 5 in GCSE Art, Photography, or Graphic Communication.

Course enquiries

Mrs Yuill will be happy to answer questions .

What our students say...

"Studying Photography has given me so many creative options."

Food Science and Nutrition

WJEC Diploma

Why choose this course?

The WJEC diploma in Food Science and Nutrition is a challenging but rewarding course aimed at students who wish to progress into a variety of food-focussed careers including working within the food and hospitality industry or in sports and nutrition, healthcare or educational settings.

Students should choose this course as they can achieve a diploma to support entry to employment or university. Food is a subject with global relevance and the skills learned on this course can help you to expand into many sectors. This course can support students progression to courses at university level, as well as a wide range of career prospects.

A look at the course content

Students will study three units over the two years:

- **Ensuring Food is Safe to Eat**
- **Experimenting to Solve food Production Problems**
- **Meeting The Nutritional Needs of Specific Groups**

What our students say...

"I have enjoyed the practical side of this course. Studying Food Science has helped me to become more organised and I really liked seeing my work presented professionally for assessment."



How is the course assessed?

The three units are assessed via internal and external assessments, with each unit graded as a pass, merit or distinction.

Possible career pathways

You could aim for a career as a food scientist or choose to pursue employment in hospitality, food education.

Entry requirements

- Achieve a high grade at GCSE.
- Be motivated and enthusiastic about both practical and theory work.
- Be organised and methodical.
- Be able to meet deadlines e.g. completing homework and submit work on time.

Course enquiries

Mrs Christodoulidou will be happy to answer any queries you have about studying this course.

Design and Technology

A Level (Eduqas)



Why choose this course?

This is a really hands on course that will give you plenty of opportunities for creativity and problem-solving. Throughout the course, students will develop their knowledge and skills through completion of a range of tasks and workshops throughout Year 12 and Year 13.

What will I study?

This is a linear qualification made up of two components. You will study theory throughout the two-year course in preparation for the Component 1 exam in June of Year 13. In Year 12, students will make a replica product of a nutcracker, a task which develops problem-solving skills and technical manufacturing skills with an engineering focus. Following on from this, students will create and develop high-quality models and prototypes of existing products using modelling materials such as cardboard, card, polystyrene and foam board. This element is focussed on improving model quality while also introducing and building on the iterative design cycle. By Easter of Year 12, students will begin their **component 2** unit.

Component 1: Design and Technology in the 21st Century (written examination): Students will undergo theory based lessons throughout the two year course where they will investigate materials, how they work and their suitability for a range of uses. Students will complete a 3 hour exam to demonstrate and apply two years worth of knowledge and study.

What our students say...

Component 2 Design and make project (non-exam assessment): A sustained design and make project, based on a brief developed by the candidate, assessing the candidate's ability to: identify, investigate and outline design possibilities design and make prototypes, analyse and evaluate design decisions and outcomes, including for prototypes made by themselves and others The design and make project will be based within the same endorsed area as the written examination.

How is the course accessed?

This is a two-year course that is made up of 50% three-hour written exam (**Component 1**) and 50% coursework - a design and make project of approximately 80 hours (**Component 2**), which is internally assessed.

Potential career pathways

This design and technology qualification supports a number of potential career pathways. Students can progress into engineering, product design, set design or interior design. The course can also set the foundations for a career as a CAD technician, CAM operator or graphic designer or resource technician, concept designer, prototypist, colour technologist, furniture designer, automotive engineer, mechanic or stylist.

Entry requirements

Students should achieve at least grade 4 in GCSE Technology, grade 4 in GCSE Maths, grade 4 in science (combined or separate) or a proven subject interest and positive attitude to work.

Course enquiries

Mrs Crosby will be happy to answer any questions you have about this course.

"I love the problem-solving aspect of the course and the professional standard equipment in our workshop means we can produce really high-quality products."

Equivalent to AS Level (AQA)



About this course

The Extended Project Qualification (EPQ) offers an exciting opportunity for students to take charge of their learning and is designed to contrast the normal experience of studying an A Level in the classroom.

What will I learn?

The EPQ is a stand alone qualification. Students have sessions in which they are taught key skills, ranging from note taking and time management, to referencing and presentation skills, which they can then implement in their projects. Students are also assigned a teacher-supervisor to provide support throughout the project. As this is an independent project, it is not the role of that member of staff to teach any of the subject matter within the student's choice of project. The role of the teacher is one of facilitator and adviser.

The EPQ requires candidates to identify, design, plan, manage and complete a project that is independent of any of their A Level subject content. Candidates will also have to problem solve and think creatively. They will evaluate their learning and present their findings to an audience, usually composed of parents, teachers, governors and their peers.

How is the course accessed?

The student picks the subject focus based on their interests, and the end product may be a 'traditional' academic report (5,000 words) or it could be a completely different output such as an artefact – a film, a concert, a painting, a website – accompanied by a written report of at least 1,000 words.

The process of planning, researching, recording and reviewing is deemed just as important as the result, so roughly half the marks available are awarded for the process and half the marks for the finished project.

What could I do next?

Students who complete an EPQ develop many transferable skills that are important in the workplace, higher education and for entrepreneurship. These skills can include creative ideation, planning and project management, research and communication via different medium. Universities recognise the benefit of this course.

Entry requirements

The Extended Project Qualification (EPQ) is a compulsory programme for all Sixth Form students accessing Level 3 courses

Course enquiries

If you have any questions about the EPQ, please contact Mr O'Neil, who will be happy to discuss the courses requirements with you.

What the University of Cambridge University says...

"We welcome the EPQ and would encourage you to take one as it will help you develop independent study and research skills and ease the transition from school/college to higher education."