

Appendix A

**BUBBLE ARRANGEMENTS SEPTEMBER 2020**

**South Avenue**

Year Group	Bubble	Entrance	Rooms	Breakout area	Outdoor space	Toilets	Lunch arrangements	ICT facilities
5	Key Stage 2	Through carpark to the bottom yard	1, 2, 3, 4, 5, 6, 8, 20	n/a	Field spaces 1,2	Main building	Eat in the Dining Hall	Laptops [booking system]
6					Field spaces 3, 4,5			
7	Lower Key Stage 3	Via side gate to the mobile classrooms	10, 11, 12, 13, 15	n/a	Field spaces 6, 7	Mobile classrooms	Eat in the Dining Hall	Room 14 and laptops [booking system]
The Quay	Various	Via side gate to the mobile classrooms	14	n/a	Field space 8	Mobile classrooms	Eat in classroom or Dining Hall	Room 14 and laptops [booking system]

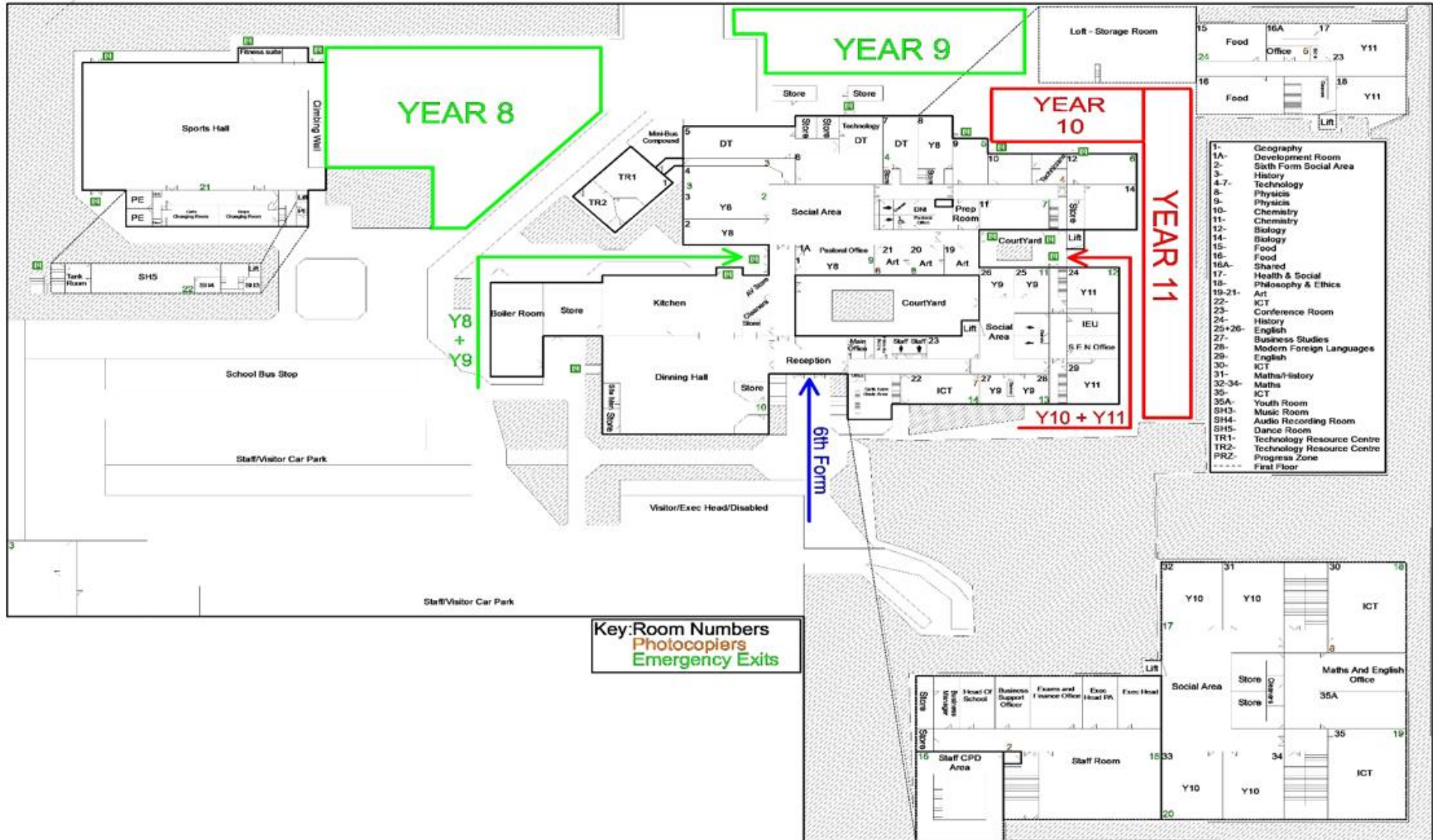
**NB. There will be no access to the car park at South Avenue between 8:30am and 9:00am to ensure the safety of students walking into school.**

**Acklington Road**

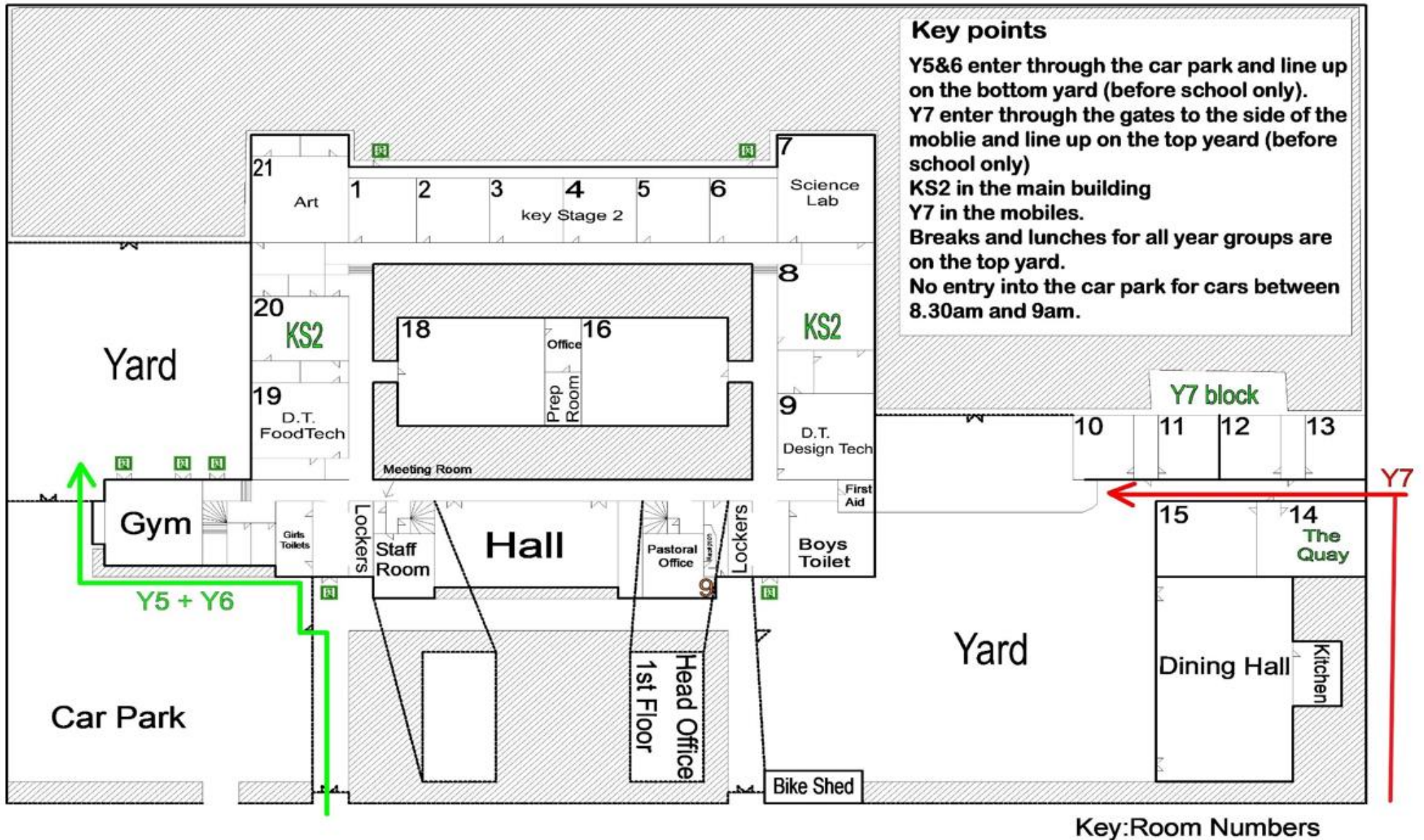
+

Year Group	Bubble	Entrance	Rooms	Breakout area	Outdoor space	Toilets	Lunch arrangements	ICT facilities
8	Upper Key Stage 3	Pupil entrance	1, 2, 3, 8	Discovery social area	Tennis courts	Discovery area	Eat in the Dining Hall	Room 22 and laptops [booking system]
9			25, 26, 27, 28	English social area	Hard standing area			
10	Key Stage 4	Via side gate next to Rm 29	31, 32, 33, 34	Maths social area	Grass area along the side of school [Rm 24 & 29]	English area	Classrooms and social area	Rooms 30 & 35 [booking system]
11			17, 18, 14	Covered area next to Art corridor	Grass area behind science [accessed through rm 12]			
			12, 24, 29 [use for options subjects for KS4 only]					
12	Key Stage 5	Main reception	TR1 and TR2 [base]	n/a	n/a	Maths area	TR1 and TR2 [base]	Bookable laptops

# Acklington Road site plan



## South Avenue site plan





## South Avenue outdoor spaces for break and lunch.

Field spaces for lessons should be booked on BromCom room booking system.

