

Identification

James Calvert Spence College uses the following sources of information to identify SEND.

- Reports from previous education providers.
- Discussions with parent (s) / carer (s) and with teachers
- Specialist reports, such as those written by GP's, Paediatricians, Educational Psychologists, Specialist Teachers, etc.
- Education, Health & Care Plans.

Approximately 13% of children within school have been identified as having special educational needs or disabilities.

Stage 1 (Quality First Teaching):

Children are supported within the classroom and staff use their knowledge gained through CPD to make learning as accessible as possible. Teaching aids may be used as well as technology to support independent access to the curriculum.

Stage 2:(SEND Support)

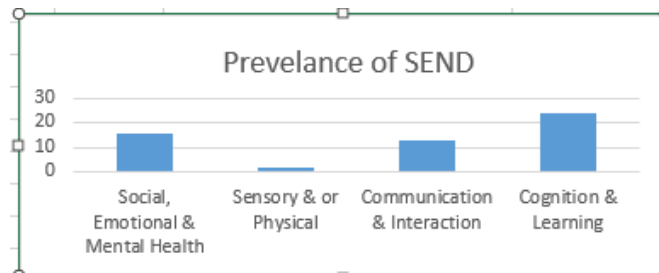
Children are supported by Learning Support Partners and have access to additional learning opportunities e.g. group intervention. This is reviewed termly.

Support

Stage 3 (EHCP):

Children are provided individual support through Learning Support Partners and specialist intervention to allow them to access the curriculum. Support is reviewed regularly.

School SEND Structure



The school has children with 9 EHCPs. We have 4 LAC child.

JCSC

SEND Overview 2020

Parent Year 8 Child

My child is happy going to school gets support he needs in the classroom . Anything we are unsure of we just ring up and we get the answers we need . (My child)seems settled even in these uncertain times.

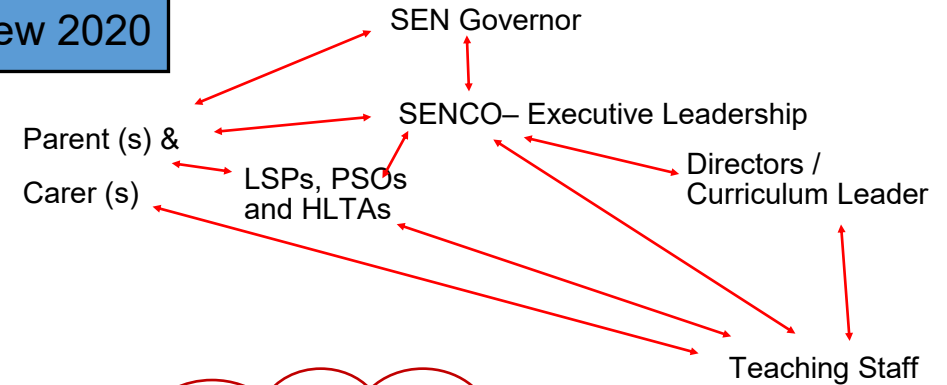
Parent Year 9 Child

"They know my child really well and often the school day would be really difficult without their guidance"

Some of our children experience difficulty at some stage during their time at JCSC however with the ongoing care and support provided by the school they are able to overcome challenges they face in order to become successful, life-long learners.

Parent of year 9 child.

"I received weekly phone calls during lock down"



SEND Policies & EHCPs reviewed annually by key stakeholders. student targets updated termly and shared with staff, this is often completed at parents evening.

All staff are responsible for SEND. This is reflected in performance reviews.

Management

Outcomes